

# George Adams

## ESTATE AGENTS



1 City Edge 19 Royce Road, Manchester, M15 5JQ

**£1,100**



Available 02/07/2026

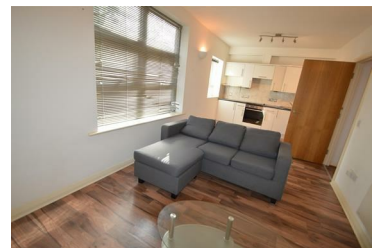
Fully furnished, ground floor apartment in Hulme, a short 10 minute walk from Deansgate/Castlefield.

The property comprises two double bedrooms, main bathroom, and an open plan lounge/kitchen living space.

The property also benefits from coded gate entry and secure parking to the rear.

A bus stop directly outside the property has frequent buses running to the Trafford Centre in one direction and Manchester City Centre/The Universities in the other direction.

Perfect student let.



Unit 1 Bishops Corner, 321 Stretford Road, Hulme, Manchester, M15 4UW  
Tel: 01612262288 Email: [enquiries@georgeadamsestateagents.co.uk](mailto:enquiries@georgeadamsestateagents.co.uk) [www.altosoftware.co.uk](http://www.altosoftware.co.uk)